

# Evaluation of BrackeC16c SMALLWOOD version

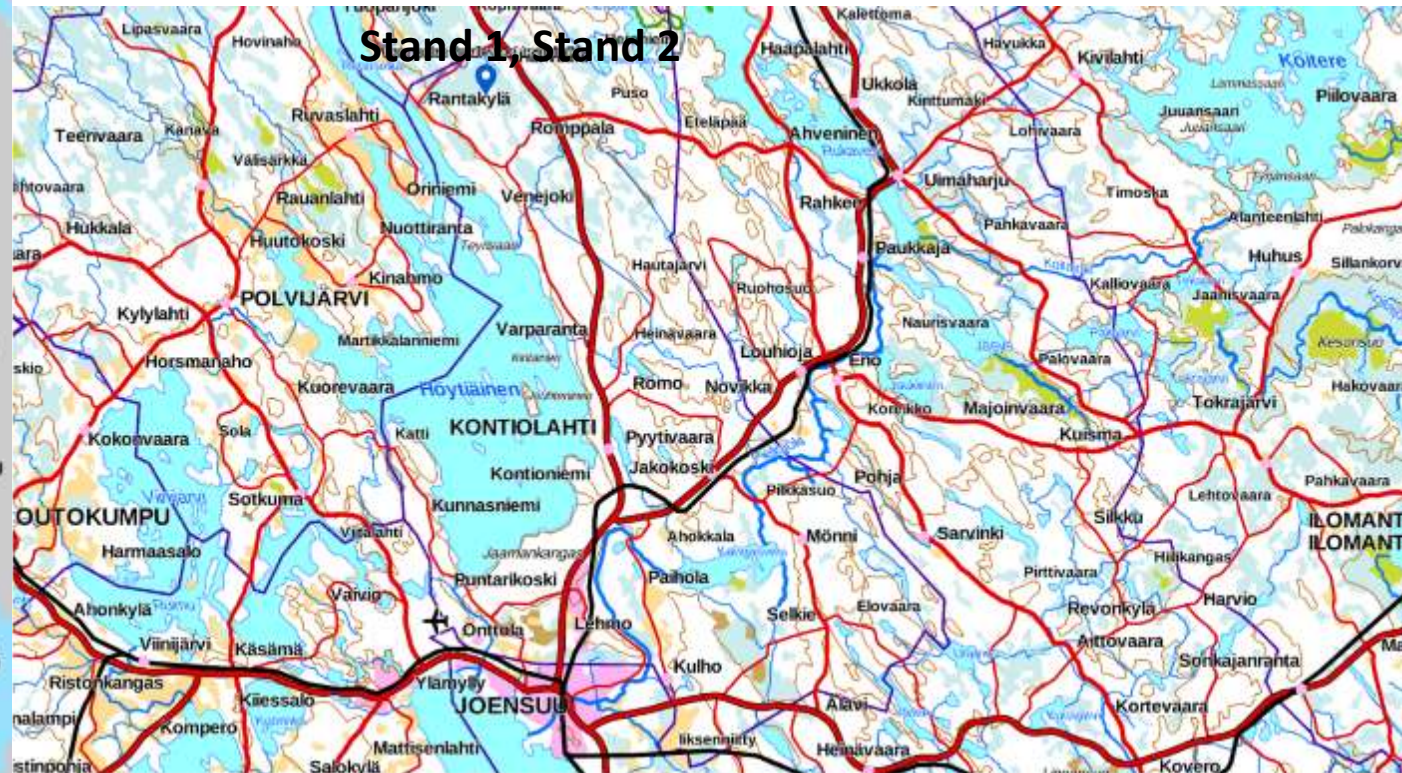
Webinar 7.12.2020



Yrjö Nuutinen

Senior Scientist, D.Sc. (Agr. & For.), Adjunct professor  
Natural Resources Institute Finland (Luke)

Materials and Methods, Finland



# Evaluation of BrackeC16c SMALLWOOD version



## Materials and Methods

Stand 1, Finland

12 study units, test cutting in October 2019

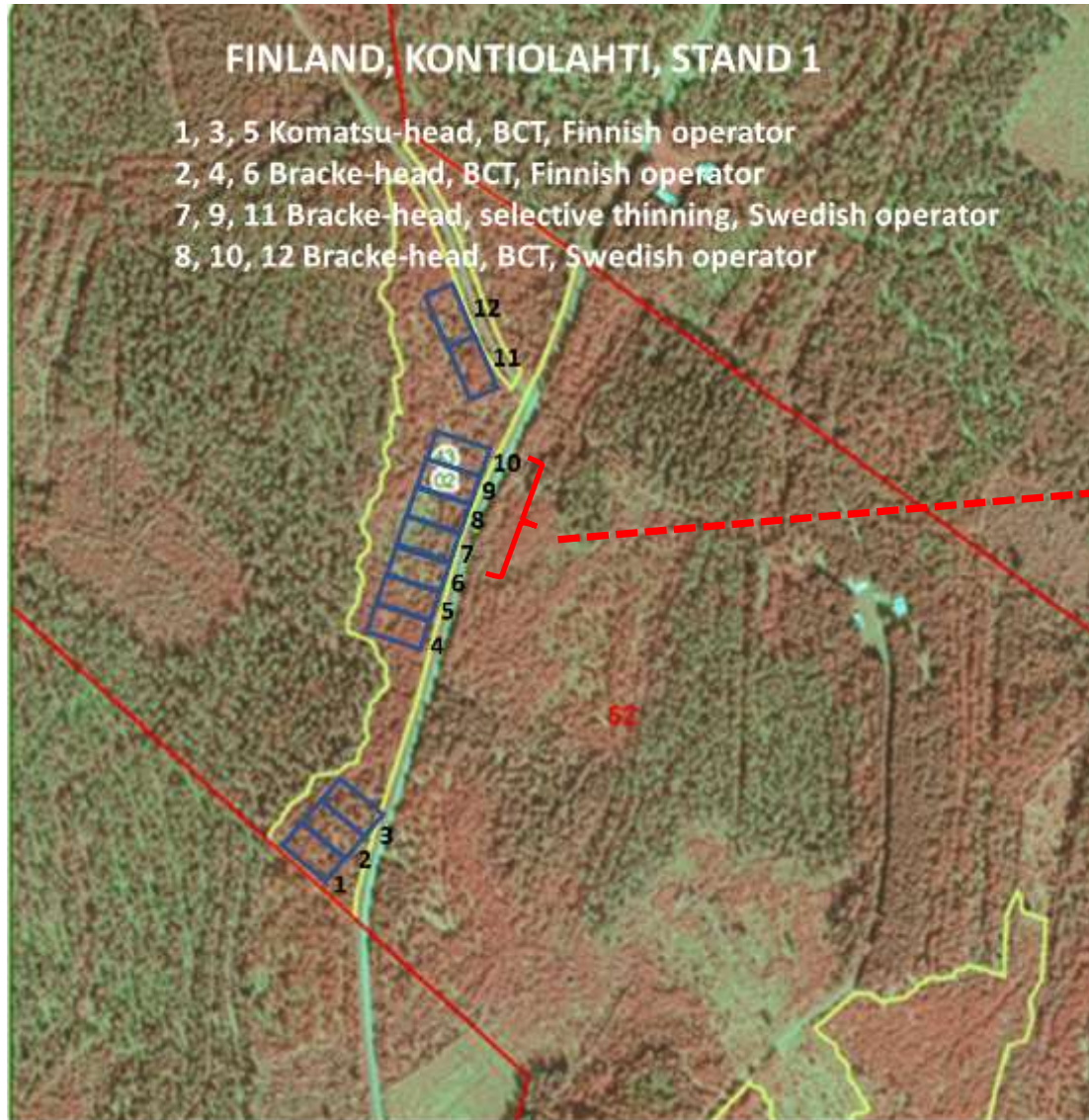
Age of the stand	27 years, not PCT
Species (%trees $\geq 7$ cm)	70% broadl, 30% spruce



# Evaluation of BrackeC16c SMALLWOOD version



## Materials and Methods



	Finnish operator 1-6	Swedish operator 7-10	Swedish operator 11, 12
DBH BAw (cm)	10,3	7,4	10,6
Height BAw (m)	10,4	8,6	10,4
Stem volume BAw (dm <sup>3</sup> )	62	28	71
Tree density (trees $\geq$ 1 cm ha <sup>-1</sup> )	5050	8325	6650
Tree density (trees $\geq$ 4 cm ha <sup>-1</sup> )	2958	4125	4000
Standing stem volume (m <sup>3</sup> ha <sup>-1</sup> )	86	70	110
Basal area (m <sup>2</sup> ha <sup>-1</sup> )	17	16	21

**Figure of plots 7-10**



# Evaluation of BrackeC16c SMALLWOOD version

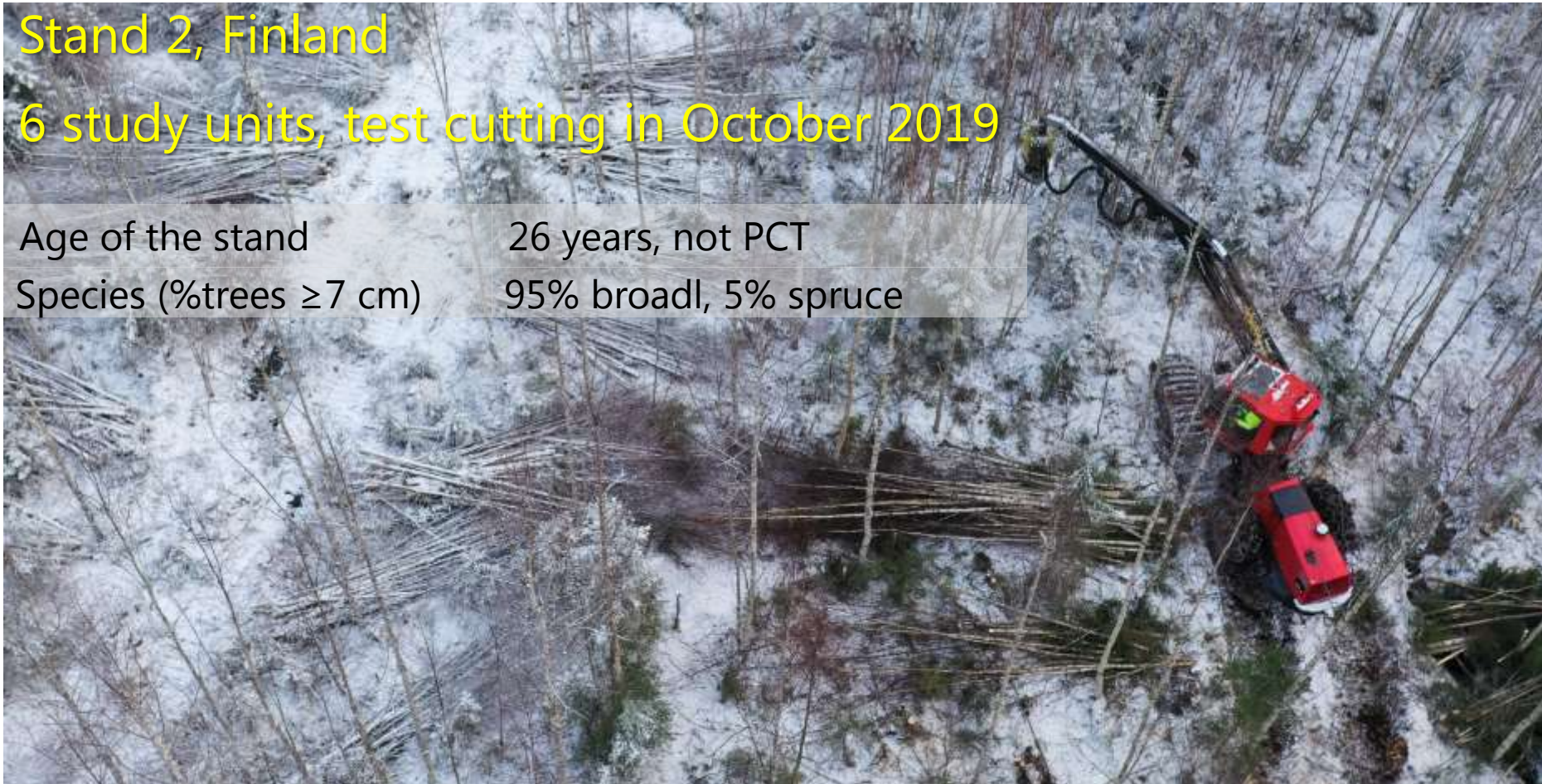


## Materials and Methods

Stand 2, Finland

6 study units, test cutting in October 2019

Age of the stand	26 years, not PCT
Species (%trees $\geq 7$ cm)	95% broadl, 5% spruce



# Evaluation of BrackeC16c SMALLWOOD version



## Materials and Methods



	Swedish operator 1, 2 (mineral soil)	Swedish operator 3-6 (peat land)
DBH BAw (cm)	8,7	8,1
Height BAw (m)	10,8	10,4
Stem volume BAw (dm <sup>3</sup> )	44	36
Tree density (trees $\geq$ 1 cm ha <sup>-1</sup> )	9825	10925
Tree density (trees $\geq$ 4 cm ha <sup>-1</sup> )	5150	5913
Standing stem volume (m <sup>3</sup> ha <sup>-1</sup> )	124	124
Basal area (m <sup>2</sup> ha <sup>-1</sup> )	23	24

# Evaluation of BrackeC16c SMALLWOOD version



Niilo in stand 1

